

ZigBee Wireless Fire Smoke Alarm

(Photoelectric detection type / Battery-powered / Voice alarm)

Model: SG-01-SK-SB for stand-alone / SG-01-SK-HB for ZigBee



User Manual

- ※ Compliant to local legal requirements
- ※ For Indoor use
- ※ Contain installation procedure

- ▶ Thank you for choosing Nietzsche's photoelectric type fire smoke detector.
- ▶ Please read the manual carefully and use the detector properly.
- ▶ Please read every details in the manual and notice every "Warning" carefully.

Before installing the detector

- ▶ The sensing technology of this detector is photoelectric smoke detection.
- ▶ The detector reports possible fire alarm, but user should not expect there will not be any fire event because installing the detector, please note Nietzsche take no responsibility for any damages from any accident in any case.
- ▶ Please note sprinkling-type of pesticide will effect the function of the detector.

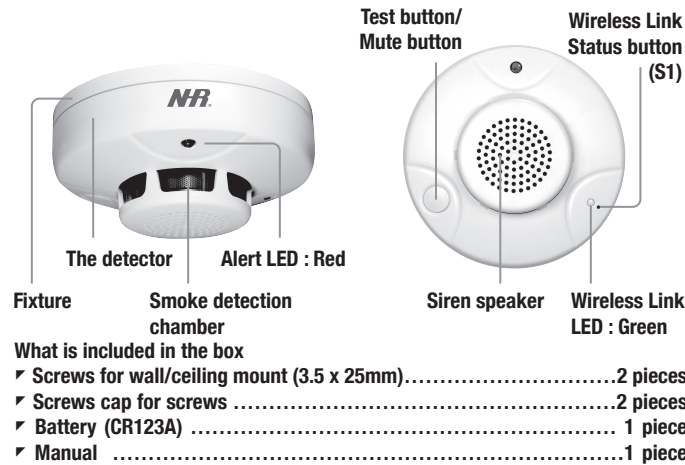
1. Safety Notice

- ♥ To protect your safety, please note below safety notice. Please make sure the Site of installation is safe during your installation, watch your feet and position, danger could happen if you do not keep your eyes on your environment.
- ♥ Please keep tools, such as battery, screws and screw drivers away from children. Children could accidentally swallow or hurt themselves if they get those tools.
- ♥ Please keep your ears a certain distance from the siren, it may hurt your ability of hearing if you get too close to the siren while it is activated at the time.

2. Notice in use

- ▶ According to the law, customer must install the detector(s) in indoor and maintain/ manage the detector's operation on their own.
- ▶ Please check if the detector still working properly every six months to make sure its functions.
- ▶ Please do not disassemble, modify, scratch, paint or shocking impact on the detector, it may cause damage of the detector.
- ▶ Please note the detector has self-detection and low-battery alarm, please be aware of any indication from the detector no matter it is flash in LEDs or beep, and read manual to find out the meanings.
- ▶ Photoelectric type smoke detector alerts only for the smoke around it, the detector may not report event for another room.
- ▶ Please make sure user can hear the alarm when installing the detector in less used room.
- ▶ Please make sure the pesticide may effect the functions of the detector, please withdraw or spread the pesticide in the place where it will not effect the detector.
- ▶ Please double check if the detector still works normally whenever you are back home after 7 days or more than 7 days trip.

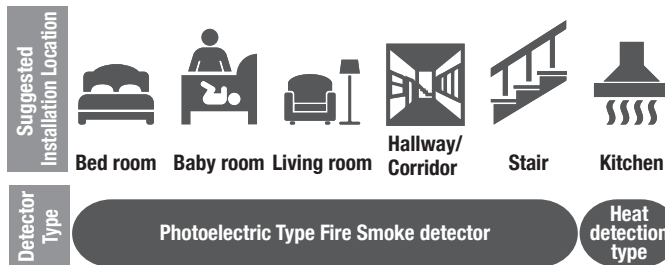
3. Detector introduction



Warning

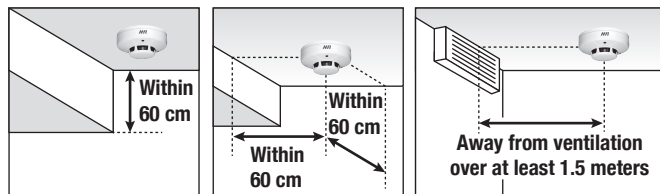
- ♥ Please make sure the battery is away from children, it will hurt children if they accidentally swallow the battery.

4. Location of Installation



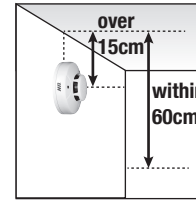
5. Installation Position

※ Ceiling-mounted



- ▶ The detector should be less than 60 cm from the ridge beam.
- ▶ Installing position should away from the ridge beam or wall at least 60 cm, and best position it in the center of the room.
- ▶ Installing the detector away from the ventilation at least 1.5 meters to avoid the false alarm caused from the air flow.

※ Wall-mounted



- ▶ Please install the detector over 15 cm and within 60 cm from the ceiling in wall-mounted style.

Warning

- ♥ Please install the detector as centered as possible, false alarm could happen frequently because of inappropriately installing position.

* Places where the photoelectric type detector should avoid installing:

- (1) Cooking area with frequently smoke or steam generating;
- (2) Places where the temperature goes sub-zero °C/ 32 °F, or over 50 °C/ 122 °F in that it is easy to damage the battery and end up causing false alarm or low battery;
- (3) Outdoor is not allowed to be installed;
- (4) Bathroom or any places where frequently wet or in high humidity places;
- (5) Places besides Lamp or lights that may block fire smoke are not allowed to install the detector, please keep those equipment at least for over 50 cm.

6. How to mount the detector

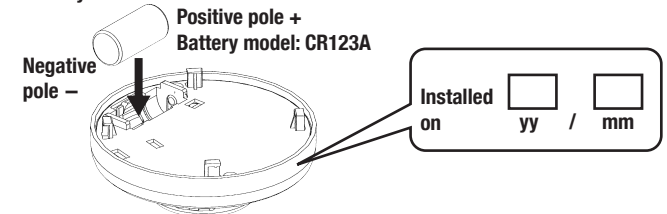
There are two ways of mounting the detector, wall-mounted and ceiling-mounted.

Warning

- ♥ Please make sure your personal safety in mounting the detector, position in installing the detector is very important and should pay high attention to avoid accidents.
- ♥ Please make sure the screws have been fixed tightly on wall, any fallen parts or detectors itself may cause damage of the detector.
- ♥ Please strengthen the wall or ceiling with a supplement board in softer wall or ceiling to avoid the damage cause from fallen parts or detector.
- ♥ Please make sure the screws or any wooden dust will not fall into eyes during installation. Please clean the dust as soon as possible if it happens and call doctor for careful check of health of installer.

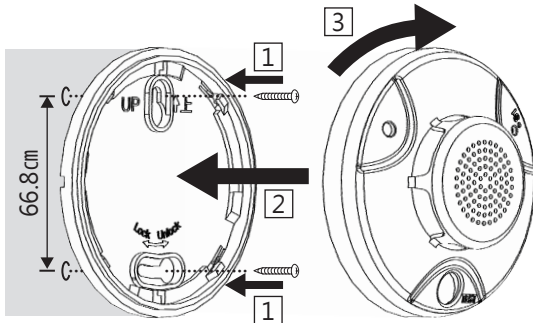
7. Procedure of installation - Preparation

1. Open the mounting bracket, and put in the battery.
2. Please write down installing date on the detector in the position where agent has suggested.
3. Please press Test Button one time and wait for a Beep to ensure the proper detector setup.
4. Please make sure the linking status for the wireless type. Green LED flashes every 65 seconds in normal status.



7. Installation – installing procedure

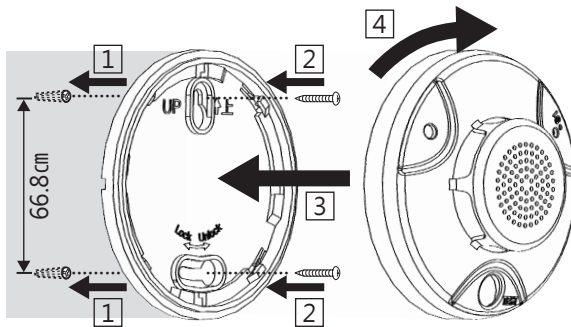
Mounting on ceiling or wall



Please fix the detector with two screws on ceiling or wall.

1. Fix the mounting bracket with two screws.
2. Place the detector in the rail of mounting bracket.
3. Turn the detector clockwise until hear a sound “KA” meaning fixing tightly.

Mounting on concrete wall



Please fix the detector with two screws on ceiling or wall.

1. Drill 2 holes on expected mounting position for 5mm for diameter and 25 mm in depth.
2. Fix the mounting bracket with two screws.
3. Place the detector in the rail of mounting bracket.
4. Turn the detector clockwise until hear a sound “KA” meaning fixing tightly.

Warning



- (1) Please mark the expected installing position on wall in advance that is helpful for drilling holes
- (2) Please make sure the Test / Mute button face down for best manual operation.

8. Operation Verification

Method for verifying detector(s) operation normally :

Please verify detector function properly after installation, battery replacement, and inspection.

Please press Test Button for 1 second for operation verification. Within 1 ~ 5 seconds, you will hear “Operations : Normal” meaning the detector functions normally; on the contrast you will hear Beep Beep meaning the detector function abnormally and it needs to proceed further treatment(s). Please refer to below Status and notification table indications :

Status	Action	Indication	
		Voice and Sound	Red LED
Power On	Put in battery or plug on DC adaptor	“Beep”	LED Flash 3 times
Normal Detecting	---	---	LED Flash per minute
Alarming	Follow local emergency SOP	“Danger! Evacuate!”	Flashing continuously
Low Power	Replace battery	“Beep” per minute	---
Operation Abnormally	Follow trouble-shooting	“Beep, Beep” per minute	Flash twice
Operation Normally	---	“Operations: Normal”	Flash 5 times

Please verify operation normally when using Wireless Type Smoke Detector

Status	Action	Indication	
		Voice and Sound	Green LED
Not connected To gateway	Please press S1 on gateway	---	Flash once per 15 second
Connected to gateway successfully	---	---	Flash 3 times
Normally connected	---	---	Flash once per 65 seconds
Disconnection	Please follow Trouble-shooting	---	Flash twice per 10 seconds
Leave network	Press 3 times on S1	---	Flashing
Reset	Press S1 for 5 seconds	---	Red & Green LED lit-on for 1 sec

9 When you hear the siren from the detector(s)

When you hear “Danger! Evacuate!” from the detector(s) and see the red Led flashing, please follow below SOP or local emergency SOP and act immediately : Please confirm the exact location where fire smoke comes from and call the Fire department after evacuate oneself. Except for fire smoke, siren could be activated in following conditions. User can stop the alarming siren by means of exchange fresh air about the detector(s).

- When the pesticide sprinkles on the detector directly.
- When the cigarette smoke gets into the detector.
- When the sanitizer sprinkles on detector.
- When the cooking smoke gets into the detector.
- When the smoke detector has condensed.
- When there is/are bug(s) or insect(s) get(s) into the detector chamber.

10 When you hear the sound notification of power low

Please contact your local dealer for battery information and replacement.

Please note the battery specification is CR123A

(Battery run time is less than one week before it starts warning about power low)

11. Maintain and inspection periodically

1. Please check the operation of detector every 6 months.
2. Please check if there is dust or stink attached on the smoke detector chamber. This will potentially cause false-alarm.
3. Method of maintaining the detector :
Please withdraw the detector from mounting bracket. And clean the ceiling or wall around the detector. Please clean the whereabouts of the detector after detaching the detector.
 - Please clean the dust with wet and clean cloth.
 - Please do NOT let the water of wet cloth leaks into the detector.
 - Please do NOT use the volatile cleaner to clean the detector, it may cause the damage on the surface of the detector.

12. Waste of detector treatment

Disposed detector and battery should strictly follow laws of local waste management.

13. Trouble-shooting

Status	Inspection	Treatment
Siren keeps activating Or No fire event, but siren keeps activating Or Press Test button and keep “Beep, Beep” meaning malfunction.	Is there any smoke from cooking, pesticide, Cigarette, and steam that gets in the detector?	Please start the air exchange in that space.
	Is there dust covered on the detector?	Please clean the dust on the detector.
	Is there any residual smoke remains on the detector?	Please clean the smoke in the detector
Mute the siren, but siren is still on.	Is the battery or power adaptor loosen?	Please make sure the battery or power cord is fixed tightly.
	Is the battery run out of power?	Please replace new battery.
Wireless disconnection	Is there is block between detector and receiver?	Please remove the block in between Please add router in between
	Is the battery is about to power low?	Please replace battery
	Is there any powerful radio radiation that Interrupts the current wireless signal?	Please remove the radio radiation source, or add router in between.