

ZigBee Wireless Indoor Carbon Monoxide (CO) Detector (Voice alarm)

Model: SG-02-CO-S1 for stand-alone / SG-02-CO-H1 for ZigBee



User Manual

- ※ Compliant to local legal requirements
- ※ For Indoor use
- ※ Contain installation procedure

- ▶ Thank you for choosing Nietzsche's ZigBee wireless CO detector.
- ▶ Please read the manual carefully and use the detector properly.
- ▶ Please read every details in the manual and notice every "Warning" carefully.

Before installing the detector

- ▶ This CO detector must be installed by a person qualified to carry out electrical work according to latest national wiring regulations.

1. Safety Notice

- ♥ To protect your safety, please note below safety notice. Please make sure the Site of installation is safe during your installation, watch your feet and position, danger could happen if you do not keep your eyes on your environment.
- ♥ Please keep tools, such as battery, screws and screw drivers away from children. Children could accidentally swallow or hurt themselves if they get those tools.
- ♥ Please keep your ears a certain distance from the siren, it may hurt your ability of hearing if you get too close to the siren while it is activated at the time.

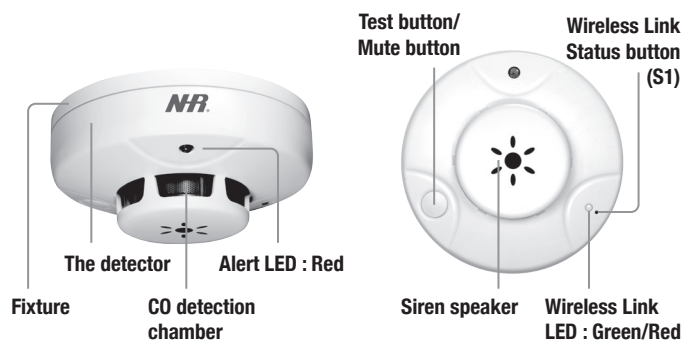
2. Notice in use

- ▶ According to the law, the customer must install the detector(s) indoors and maintain/ manage the detector's operation on their own.
- ▶ Please check if the detector still working properly every six months to make sure its functions.
- ▶ Please do not disassemble, modify, scratch, paint or cause shocking impact on the detector, as these actions may cause damage to the detector.
- ▶ Please note the detector has self-detection function, please be aware of any indication from the detector no matter it is flash in LEDs or beep, and read manual to find out the meanings.
- ▶ Please make sure that the user can hear the alarm when installing the detector in less used room.

Warning

- ♥ Silicones could permanently damage the detector. Please avoid using silicone sealant or any household or cosmetic product containing silicone in the vicinity of the detector.

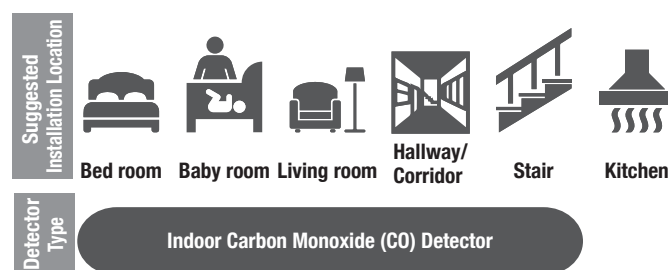
3. Detector Introduction



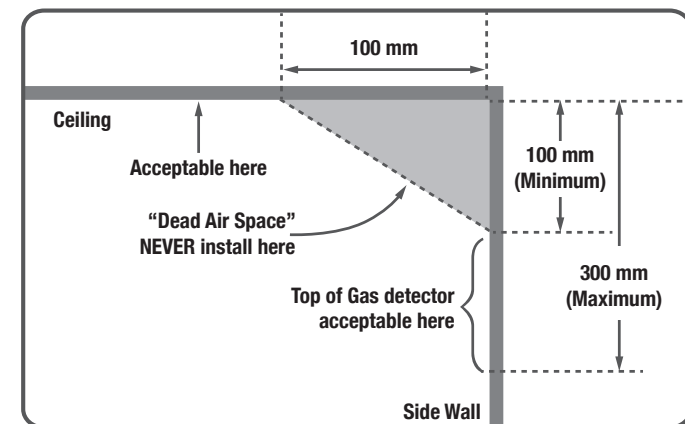
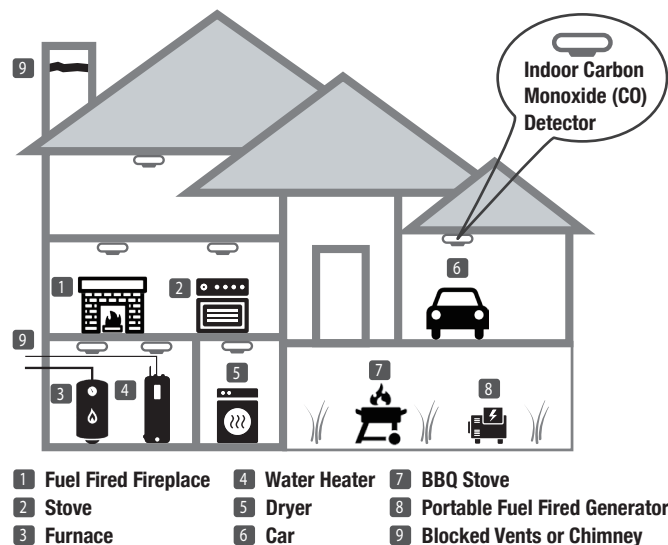
What is included in the box

- ▶ Screws for wall/ceiling mount (3.5 x 25mm).....2 pieces
- ▶ Screws cap for screws2 pieces
- ▶ AC adapter (12V) 1 piece
- ▶ UserManual.....1 piece

4. Location of Installation



5. Installation Position



- ▶ Please install the detector over 30 cm and within 60 cm from the ceiling or (clarify meaning) in wall-mounted style (for Natural Gas).

Warning

- ♥ Please install the detector as centered as possible, false alarm could happen frequently because of inappropriate installation position.

- ※ Places where the CO detector should avoid installing :
 - (1) Cooking area with frequent smoke or steam generating
 - (2) Outdoor is not allowed to be installed
 - (3) Bath room or any places inappropriate installation

6. How to mount the detector

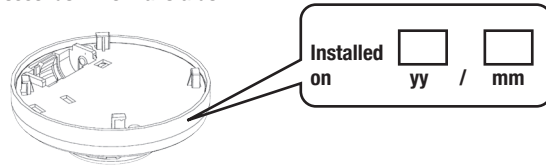
There are two ways of mounting the detector, wall-mounted and ceiling mounted.

Warning

- ♥ Please make sure your personal safety in mounting the detector, position in installing the detector is very important and should pay high attention to avoid accidents.
- ♥ Please make sure the screws have been fixed tightly on wall, any fallen parts or detectors itself may cause damage of the detector.
- ♥ Please strengthen the wall or ceiling with a supplement board in softer wall or ceiling to avoid the damage cause from fallen parts or detector itself.
- ♥ Please make sure the screws or any wooden dust will not fall into eyes during installation. Please clean the dust as soon as possible if it happens and call doctor for careful check of health of installer.

7. Installation - Preparation Procedure

1. Open the mounting bracket, and get the adapter wire go through the mentioned hole.
2. Please write down installing date on the detector in the position where agent has suggested.
3. After power on, please hear Beep sound to ensure the proper detector setup.
4. Please make sure the linking status for the wireless type. Green LED flashes every 2 seconds in normal status.



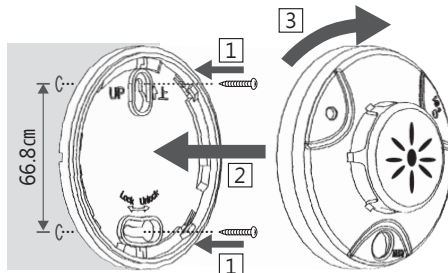
Warning



- (1) Please mark the expected installing position on wall in advance that is helpful for drilling holes
- (2) Please make the Test / Mute button face down for best operation.

8. Installation – Mounting Procedure

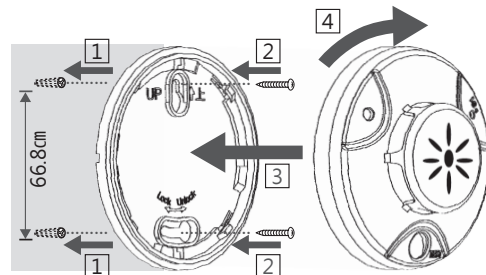
Mounting on ceiling or wall



Please fix the detector with two screws on ceiling or wall.

1. Fix the mounting bracket with two screws.
2. Place the detector in the rail of mounting bracket.
3. Turn the detector clockwise until hear a sound “KA” meaning fixing tightly.

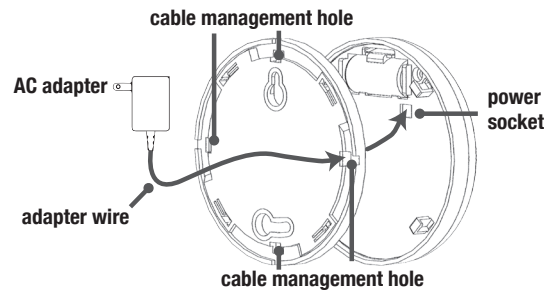
Mounting on concrete wall



Please fix the detector with two screws on ceiling or wall.

1. Drill 2 holes on expected mounting position for 5mm for diameter and 25 mm in depth.
2. Fix the mounting bracket with two screws.
3. Place the detector in the rail of mounting bracket.
4. Turn the detector clockwise until hear a sound “KA” meaning fixing tightly.

Installing the power supply



Before setting up the detector, please firstly get the adapter wire through the bottom cable management holes. (There are four cable management holes, please find one proper position.) Connect the power socket in mentioned position, and power on AC adapter.

9. Operation Verification

Method for verifying detector(s) operation normally :

Please verify detector function properly after installation and inspection.

Please press Test Button for 1 second for operation verification. Within 1 ~ 5 seconds, you will hear “Operations : Normal” meaning the detector functions normally; on the contrast you will hear Beep Beep meaning the detector function abnormally and it needs to proceed further treatment(s). Please refer to below Status and notification table indications :

Status	Action	Indication	
		Voice and Sound	Alert LED (Red)
Power On	Plug in AC adapter	“Beep”	Flashes for 30 seconds
Normal Detecting	---	---	Flashes once per minute
Alarming	Follow local emergency SOP	“Danger! Evacuate!”	Flashes continuously
Abnormal Operation	Follow troubleshooting	“Beep, Beep” per minute	Flashes twice
Normal Operation	---	“Operations: Normal”	Flashes 4 times

Please verify operation normally when using Wireless Type CO Detector

Status	Action	Indication	
		Voice and Sound	Wireless Link LED
Not connected to gateway	Please press S1 on gateway	---	Green LED flashes once per 5 seconds
Connected to gateway successfully	---	---	Green LED flashes 3 times
Normally connected	---	---	Green LED flashes once per 2 seconds
Disconnection	Please follow Troubleshooting	---	Green LED flashes twice per 5 seconds
Leave network	Press 3 times on S1	---	Red LED flashes continuously
Reset	Press S1 for 5 seconds	---	Green & Red LED lights ON for 1 sec

10 Remote Monitoring of Wireless CO Detector

(For SG-02-CO-H1 wireless model only; will require a parent device [coordinator/gateway, e.g. G07])

1. Please join your detector to the parent device's wireless IoT (Internet of Things) network.
2. Please go to Sentrol Cloud website (<http://www.sentrolcloud.com>) or download and launch Sentrol Cloud APP, then follow instructions to register and activate a Sentrol Cloud account.
3. Login to Sentrol Cloud platform via Sentrol Cloud website or Sentrol Cloud APP.
4. Your parent device will receive statuses from your detector (alarm/non-alarm), and the cloud platform/APP will notify you of any alarms. For more detailed remote monitoring instructions, please refer to instructions on Sentrol Cloud website.

11. When you hear the siren from the detector(s)

When you hear “Danger! Evacuate!” from the detector(s) and see the red LED flashing, please follow below SOP or local emergency SOP and act immediately : Please confirm the exact location of CO leakage and call the Fire department after evacuate oneself. Except for CO leakage, siren could be activated in following conditions. User can stop the alarming siren by ventilating the environment around the detector(s).

- When the pesticide sprinkles on the detector directly.
- When the sanitizer sprinkles on detector.
- When the gas detector has condensed.
- When bugs or incents enter the detector chamber.

12 Periodic Maintenance and Inspection

- Please check the operation of detector every 6 months.
- Please check if there is dust or stink attached on the CO detector chamber. This will potentially cause false-alarm.
- Please withdraw the detector from mounting bracket. And clean the ceiling or wall around the detector.
- Please clean the whereabouts of the detector after detaching the detector.
- Please do NOT let the water of wet cloth leaks into the detector.
- Please do NOT use the volatile cleaner to clean the detector, it may cause the damage on the surface of the detector.
- Disposed detector should strictly follow laws of local waste management.

13 Troubleshooting

Status	Inspection	Treatment
Press Test button and keep “Beep, Beep” meaning function error	Is the test button has been pressed accidentally?	Please power on the device again.
Wireless disconnection	Is there is block between detector and receiver?	Please remove the block in between Please add router in between
	Is there any powerful radio radiation that Interrupts the current wireless signal?	Please remove the radio radiation source, or add router in between.