



**Description:**

Around 2,400 people are killed each year in residential fires in the US, and another 500 die from carbon monoxide (CO), a colorless, odorless gas that's known as the "silent killer". Installing CO alarms throughout your home is the first step toward staying safe.

According to Occupational Safety and Health Administration (OSHA) regulations limit workplace concentrations to 50 ppm, thus, every workplace and residences should have CO alarms are a must in all places with fuel-burning appliances such as a furnace, water heater, range, cooktop or grill. Even an all-electric home may benefit from a couple of CO alarms because using a generator during a blackout produces CO. You need alarms that detect flaming and smoldering fires for each bedroom, with at least one set on each

level, including the attic and basement. You should also have a CO alarm on each living level, in the basement, and near (not inside) an attached garage.

Using the UL-certified CO sensor with electrochemical sensing technology, you can rely on our unit continuously monitoring the air for any sign of Carbon Monoxide danger.

**Features & Benefits**

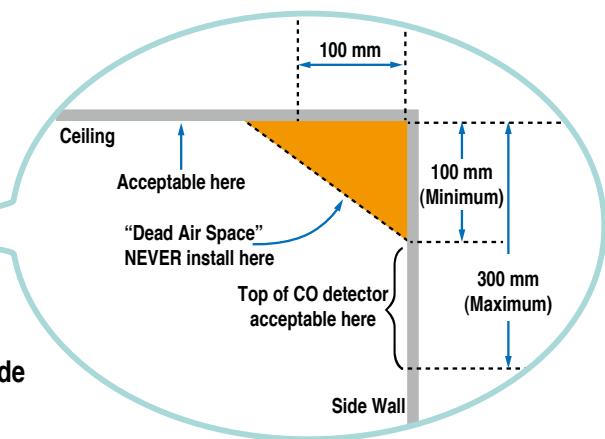
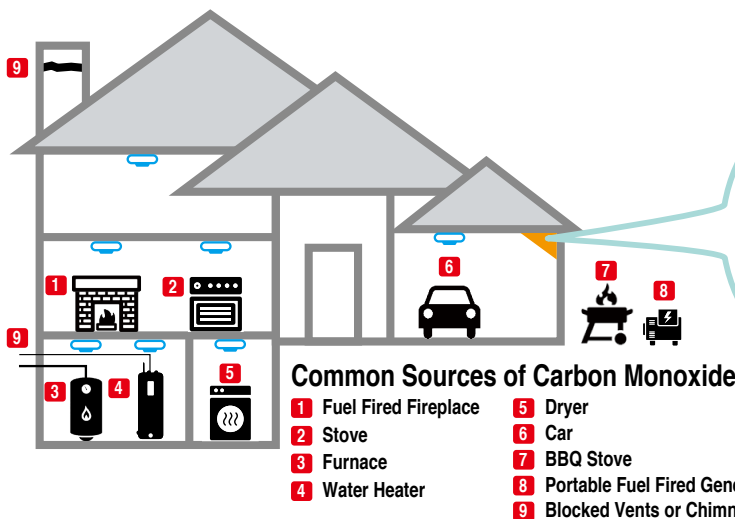
- Single device for CO detection that uses wireless and no junction box installation hassles.
- Compatible with a wide range of control panels with the use of the ZigBee receivers in MudBus or Zigbee home automation profiles.
- Sends distinct CO signals and low power signals to the panel wirelessly
- Built-in 85dB sounder with human voice alarm
- LEDs display for CO status and wireless status
- Versatile mounting allows for wall or ceiling placement
- Self-diagnosis enables functional test by the installer
- Drift compensation and smoothing algorithms provide false alarm immunity
- Full agency compliance with UL 268 and UL 2075

**Specifications**

Detecting Technology	Electrochemical oxidation process of CO
Detection Gas	CO (Carbon Monoxide)
Measurement Range	0 ~ 2000 ppm
Sensitivity	0.023 ± 0.008 µA/ppm
Alert Indication	Event alarm at level of 100 ppm CO concentration
Resolution ratio	0.5 ppm
Power Supply	12 VDC adaptor
RF Communication	Wireless ZigBee
RF Protocol	ZigBee Standard Home Automation Profile
RF Band	2.40 ~ 2.48 GHz
RF Transmit Distance	50 Meters (Open space)
Operation Temp.	0 °C ~ +50 °C / +32 °F~ +122 °F

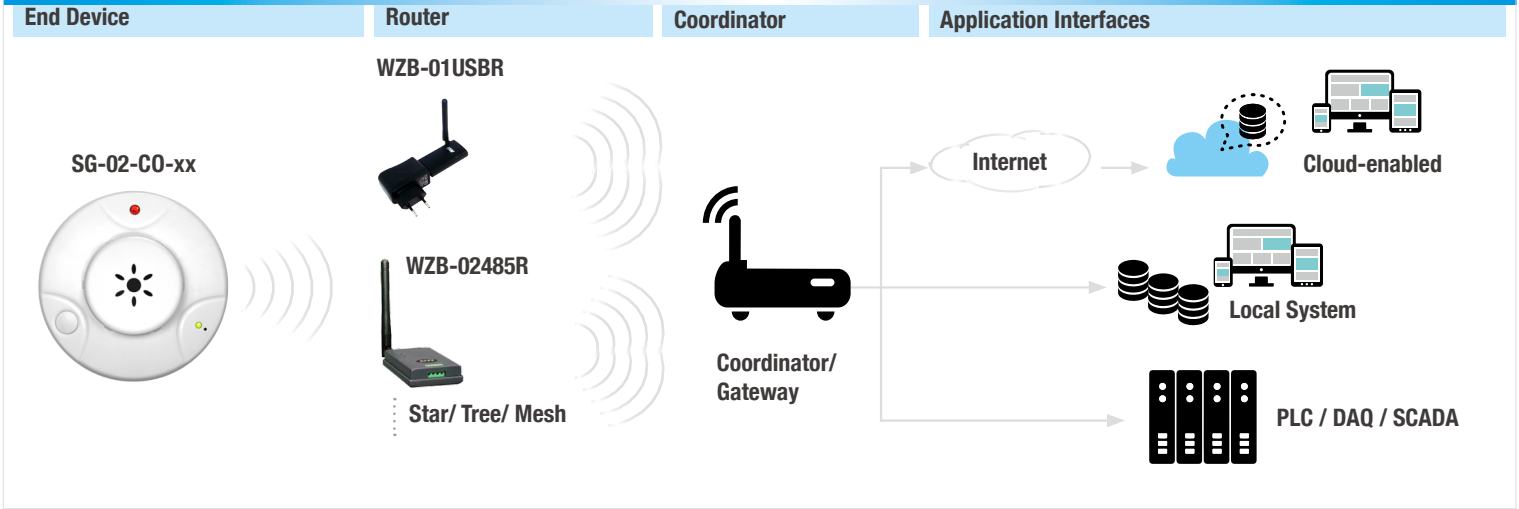
Storage Temperature	-20 °C~ +50 °C / -4 °F~ +122 °F	
Operation Humidity	0 ~ 95 % Relative Humidity (Non-condensing)	
Storage Humidity	15 %~90 %RH	
Pressure range	Normal atmosphere ±10%	
Material	UL 94_V0 fire protection material	
Dimensions	(D)100 mm X (H) 40 mm (including fixture)	
Weight	Detector: 182 g/ 6.42 oz (with adaptor); Adaptor: 92 g/ 3.25 oz	
Color	Pearl-white	
Light Indication	LED: Green for wireless link; Red for event alarm	
Siren Indication	80 dB human voice alarm	
Compliance	Element	UL20130131-1340403
	Detector	UL2034, EN50291, CE, FCC, RoHS

**Sources of Carbon Monoxide and Recommended Installation Location**



CO alarms are to be installed on or near the ceilings and not within dead air space

**System Configuration**



**Ordering rules and codes**

SG-02-CO-xx

- Power supply: 1 for US; 2 for EU; 3 for UK
- Protocol: H for HA; M for ModBus; S for Stand-alone
- Sensor: Carbon Monoxide (CO)

**Ordering codes**

Ordering codes	Description
SG-02-CO-H1	ZigBee Indoor Carbon Monoxide Detector with US adaptor with ZHA profile
SG-02-CO-H2	ZigBee Indoor Carbon Monoxide Detector with EU adaptor with ZHA profile
SG-02-CO-H3	ZigBee Indoor Carbon Monoxide Detector with UK adaptor with ZHA profile
WZB-01USBC	ZigBee USB dongle
WZB-05ET	ZigBee ethernet gateway (Supports DHCP)
G07	SentrolCloud controller gateway for ethernet/ 3G/ Wi-Fi
WZB-01USBR	ZigBee repeater/ router - AC Universal adaptor power supply
WZB-02485R	ZigBee repeater/ router - DC 9 - 24 power supply