



A08 Power Meter Actuator User's Manual

Ver. 1.01

Copyright 2011-15 Nietzsche Enterprise Co., Ltd. All rights reserved

Nietzsche Enterprise reserves the right to make changes and improvements to its products without notice.

Email: zigbeenhr@shop-wifi.com, Website: www.shop-wifi.com/wireless-sensors

Content

Warnings	2
Product Overview	2
Feature and Benefit	3
Product Specifications	3
Getting Started	4
Software Installation.....	4
Interface Installation.....	4
Make Communication.....	4
Application	5
Warranty	5

Copyright 2011-15 Nietzsche Enterprise Co., Ltd. All rights reserved

Thank you for purchasing A08 ZigBee Power Meter Actuator, it is a cost-effective energy monitoring and management solution designed for Home/ Office our any building area networks.

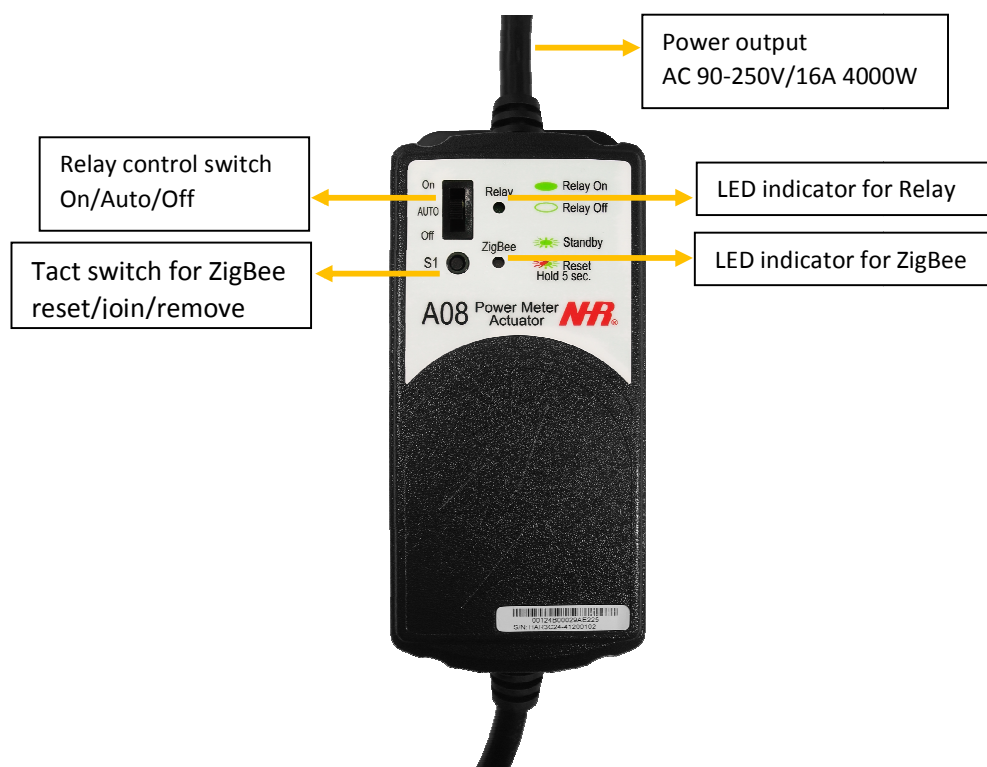
It is a ZigBee based plug-in power meter that can help households or office/building owners monitoring their electricity usage and save their bills. The device is designed to be deployed in a power cabinet to measure and monitor power consumption throughout the entire home or office.

It is now available in two models to meet US and European electrical requirements.

Warnings

- Do not store in high temperature, damp condition, and direct sunlight.
- Do not attempt to disassemble, open, crush, bend or deform.
- Do not put or dispose of in fire or water.
- Avoid dropping this device, especially on hard surfaces.

Product Overview



Feature and Benefit

1. Wide range of application with it operating voltage: Max 250VAC, 50/60 Hz, and max power: 4000W.
2. Wireless activation by Gateway Coordinator to trigger devices such as fans, heaters, irrigation devices, etc.
3. UL and VDE certification to guaranty product safety.
4. Interoperable with Sentrol Cloud and G07 series gateway coordinator for complete automation.
5. Measure and report power consumption of triggered devices, so users can manage the energy consumption and proactively plan for saving energy.
6. Wireless Data Transmission: 300 meters.

Product Specifications

Aggregator Network	ZigBee Home Automation
Wireless Protocol	IEEE 802.15.4 ZigBee2007/PRO HA Profile
Transmission Range	300 meters / 984 ft (Free space)
Operating Frequency	2.4GHz ISM Band
RF Output Power	18 dBm
Receiver Sensitivity	-92dBm
Network Topology	Star/ Tree/ Mesh
Power Supply	AC 90-250V @ 16A 50/60Hz 4000W
Dimensions	150(L) *64(W) *35(H) mm Input/ output power cord 400mm
Weight	Euro type adaptor: 400g USA type adaptor: 330g
Operating System	Windows 95 – Windows 8
Certifications	CE/ FCC
Parameter	PAN ID, RF Channel Configurable
Sensor Items	V- Instantaneous Voltage I- Instantaneous Current P- Instantaneous Power PF- Power Factor
Memory & Zero Data Loss Data Logging Function	256Kb flash memory stores data if connection to cloud database is lost

Getting Started

You would need DataView interface, a PC running Windows XP or later, a coordinator like WZB-01USBC or any third party ZigBee enabler and the A08 itself to start the operation.

Related product

WZB-01USBC (Coordinator)



Software Installation

By communicate with A08; you will need to install PL2303 to enable WZB-01USBC, link <http://www.sentrolcloud.com/nhr/view/front/download.php> PL2303_Prolific_)

By reading the data of A08 you will need to install DataView software (link <http://www.sentrolcloud.com/>) and install the NHR ZigBee DataView System.

Interface Installation



After DataView installation is complete, you will see a new icon on your desktop.

You can now plug WZB-01USBC (or any third party coordinator) into USB port.

Make Communication

- Push & hold S1 on A08 for 5 seconds, Red LED flash once, then ZigBee Green LED flash in every 5 seconds, means ready to join.
- Quick press once S1 on WZB-01USBC, Red + Blue LED flash twice, means ready to join.
- ZigBee Green LED continuous flash slowly on A08, means success joined.

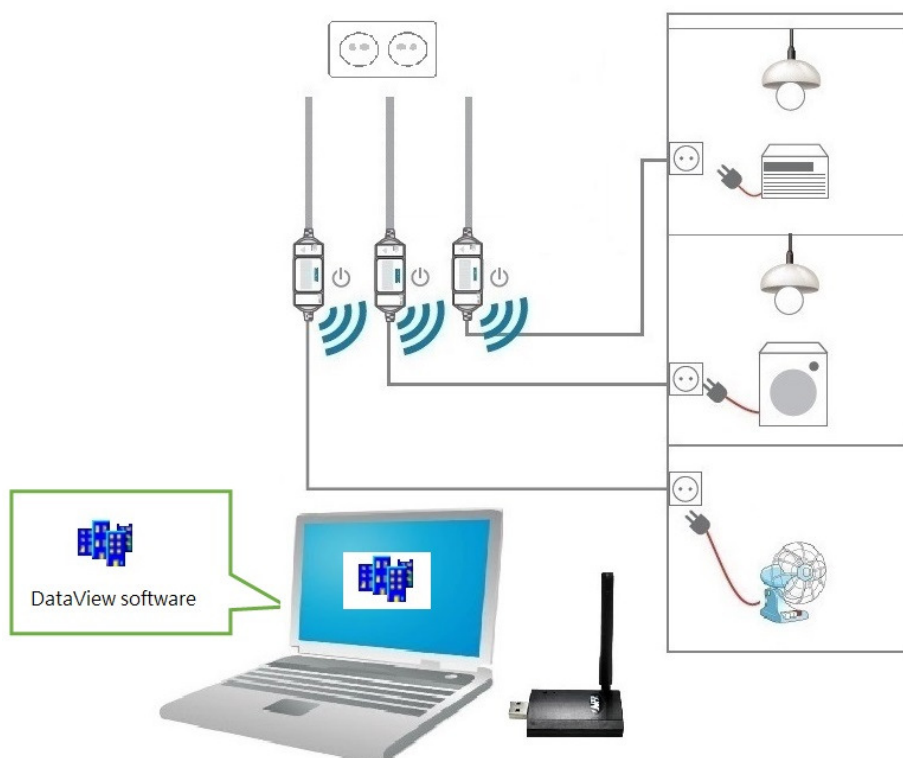
**** The A08 between the gateway/coordinator should be apart more than 1 meter during join process.**

Relay setting

- Auto (default) ZigBee remotely control by Gateway/Coordinator.
- On: manual setting rely always On.
- Off: manual setting rely always Off.

**For auto control by coordinator, please check “Quick Guide of DataView” at www.sentrolcloud.com

Application



Warranty

A08 is free from defects in materials and/ or workmanship under normal use for a period of one year from the date of shipment from NHR.

Thank you for choosing A08, it is our pleasure to provide service to you!